

Quick Start Guide

Rugged Tablet



Table of contents

Package Contents	4
Description of the tablet	5
Replacing the battery	8
Inserting mini SIM & Micro-SD cards	10
Windows	
Getting started	12
Connecting to a WiFi	14
Getting familiar with Windows 10	15
The Windows 10 interface	16
Windows notification center	18
Android	
Getting started	20
4G & WiFi connections	22
Google & Contacts	24
Hints & tips	26
Windows operating instructions of special function module	27
Android operating instructions of special function module	34
Product accessories	43

As we are often updating and improving our products, your device's software may have a slightly different appearance or modified functionality than presented in this Quick Start Guide.

Package Contents

Check your product box for the following items:

- 10.1" Rugged tablet with hand strap and battery
- Active Stylus pen
- Battery for stylus pen
- Micro USB cable
- USB host cable
- AC adapter with EU, UK and US plug

The items supplied with your device and available accessories may vary depending on your region or service provider.

The supplied items are designed only for your device and may not be compatible with other devices.

Unapproved accessories may cause your device to malfunction.

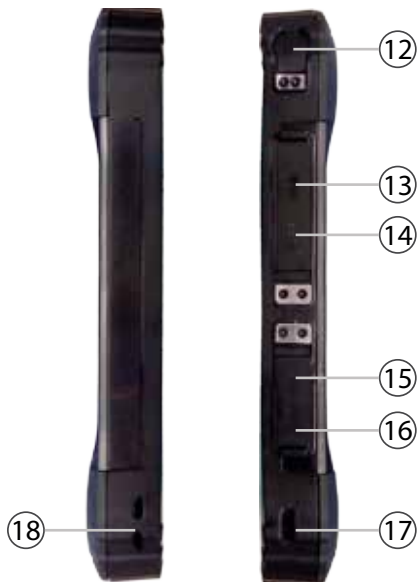
Description of the tablet

- ① Touchscreen
- ② Webcam
- ③ Ambient light sensor
- ④ Barcode scanner (option)
- ⑤ Tether fixation
- ⑥ Power button
- ⑦ Barcode button
- ⑧ Windows button
- ⑨ Volume +
- ⑩ Volume -
- ⑪ Docking connector



Description of the tablet

- ⑫ DC-In
- ⑬ USB port
- ⑭ Micro USB port
- ⑮ HDMI port
- ⑯ Headphone
- ⑰ Kensington Lock
- ⑱ Tether fixation



Description of the tablet

- ①⑨ Battery cover ②① Hand strap fixation points ②③ Fingerprint reader
②⑦ Camera ②② RFID reading zone



Replacing the battery

WARNING: Make sure to turn off your Fieldbook before removing the battery.

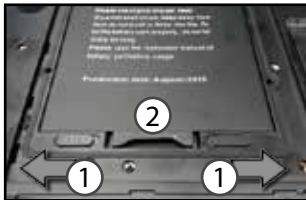
Removing the battery

1. Unscrew the six battery cover screws on the back of the tablet.
2. Lift up the cover using the opening above the RFID reading area.
3. Remove the cover.
4. Slide open the two battery latches (*Picture 8.2* ①)
5. Pull out the battery (*Picture 8.2* ②)

Picture 8.1



Picture 8.2



Picture 8.3

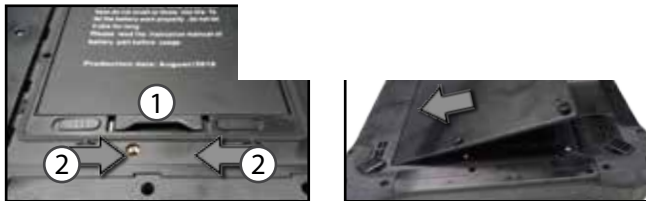


Replacing the battery

Inserting the battery

1. Insert the battery with the contact side first into the battery compartment and slide the battery to the end (*Picture 8.3*)
2. Push down the other side of the battery (*Picture 9.1* ①) and close the two battery latches (*Picture 9.1* ②)
3. Put the battery cover back into place (side with latches first) (*Picture 9.2*)
4. Push the battery cover down and tighten the six battery cover screws (*Picture 8.1*)

Picture 9.1



Inserting mini SIM & Micro-SD cards

WARNING: Make sure to turn off your device before inserting a SIM or memory card.

To install or remove a SIM or SD card, the battery has to be removed first. Please refer to “Removing the battery” on page 8.

Inserting the mini SIM card

The slot accepts only mini SIM cards. Insert the card into the SIM slots like shown in the picture on the right.

Inserting a SD card

Insert the micro SD card like show in the picture on the right.

Closing

Please refer to “Inserting the battery” on page 9.

Tip:

For the SIM card, a Pin number may be requested. Enter the SIM card pin number and tap OK.

Inserting mini SIM & Micro-SD cards



Windows // Getting started

Turn ON

1. Press and hold the ON/OFF button to turn on the device.

Turn OFF

1. Click on the Windows symbol on the lower left corner of the screen.
2. Select the Power button , then select Shut down.

Initial setup

The first time you start up your device, the Windows Startup Screen will be the first screen displayed. Follow the on-screen instructions on each screen in order to properly install the operating system. We strongly recommend that you create a Microsoft account, so you can enjoy more features.

Tip:

If the Fieldbook is used by more than one person, it is recommended to create an user account for each person. Every user can set its default parameters to his needs.

Windows // Getting started

Microsoft account

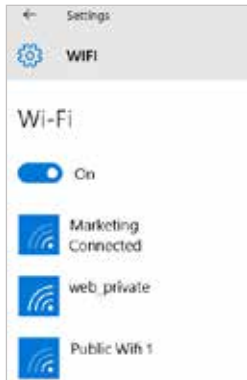
A Microsoft account is an email address and password that you use to sign in to Windows. It's free and easy to set up, and you can do so with any email address you choose, or get a new email address (for example, you can use an Outlook.com, Gmail, or Yahoo! address for your Microsoft account.). With a Microsoft account, you can:

- get apps from the Windows Store
- back up all your important data and files using free cloud storage
- link your social networking accounts to the People app, and you'll see your friends' contact info and status updates in one place



For detailed information about how to use Windows 10, please visit:

<http://windows.microsoft.com/en-us/windows-10/getstarted-get-to-know-windows-10>

Windows // Connecting to a WiFi network



Make sure that you are in a WiFi zone.

1. Click on the arrow  on the lower right corner and select the WiFi icon .
2. Select the name of network you want to connect to, tap on Connect and enter a password if required.

Tip:

- To get the correct WiFi password (or settings) for the network, contact the WiFi network provider.
- If you want to connect to this network every time it's in range, select the 'Connect automatically' check box.

Windows // Getting familiar with Windows 10

Turning the device off

In Shut Down Mode, no data will be saved and the tablet will boot to the operating system's main screen the next time it is turned on. If you have entered data, either save it to the internal storage or to other storage media.

1. On the left side of the screen, select the Windows button.
2. Select the Power button , then select Shut down.

Or press and hold the power button for about 2-10 seconds till the screen 'Slide to shut down your PC' appears and then use the touchpad to slide down the screen.

Start screen tiles customisation

Pinning icons: Use the touchpad and the touchpad buttons to select the icon you want to move from your apps list to the Start screen.

Moving icons: If you want to move an icon, Use the touchpad and the touchpad buttons to select the icon and drag it to where you want it and drop it.

More options for icons: Use the touchpad and the right touchpad button to click a tile and show options.

Windows // The Windows 10 interface

Start Screen



The “Start” screen is the launching pad to access your favourite apps and websites with only one click. To access this screen, click the Windows button on the lower left corner of the screen.

Slide to the right



Slide from the left side of the screen to the right to open the running programs

Windows // The Windows 10 interface

Slide to the left



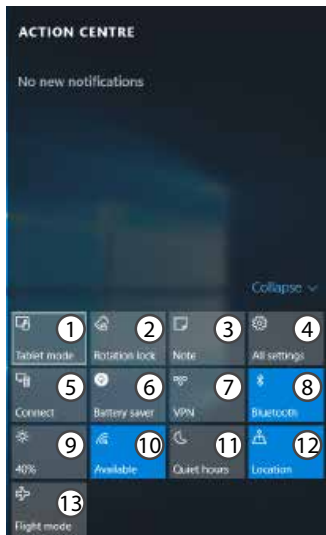
Slide from the right side of the screen to the left to open the notification center


Slide down



Slide down from the upper side of the screen while a window is open. You can then place the window on either side to start the split screen.

Windows // Windows notification center



Click the  icon in lower right corner of the screen to display the notification center.

- 1 - To change from PC mode to tablet mode
- 2 - To turn on/off the screen rotation
- 3 - To take notes
- 4 - To access all settings
- 5 - To connect other devices
- 6 - To manage the device's battery
- 7 - To make a VPN connection
- 8 - To turn on/off the Bluetooth connection
- 9 - To adjust the screen brightness
- 10 - To turn on/off the WiFi connection
- 11 - To turn on/off the Quiet hours option
- 12 - To turn on/off location services
- 13 - To turn on/off the flight mode

Android // Getting started

Turn ON

1. Press and hold the ON/OFF button to turn on the device.
When you turn on your device, a PIN code may be requested.
2. Type the PIN code supplied with your SIM card.
Beware of typing a wrong PIN code.
3. Select 'OK'.

Turn OFF

To turn off your device, press and hold the ON/OFF button, and then select Power off > OK.

Sound & Notification profiles

1. When the device is turned on, press the Volume Up/Down button.
2. Select an option.

Tip:

Your device goes in standby mode when you do not use it for a specified period of time. To wake up your device, press the ON/OFF button.
To set the duration, go to Settings > Display > Sleep.

Android // Getting started

Through the wizard

The first time you start up your Fieldbook, the installation wizard will help you set up your device:

- Language
- Date & time
- WiFi connection
- Location service options

Touch screen actions:

Tap: Touch once to select or launch a menu, option, or application.

Tap and hold: Tap an item and hold it for more than 2 seconds.

Drag: Tap an item and move it to a new location.

Double-tap: Tap an item twice quickly.

Flick: Briskly scroll up, down, left, or right to move through lists or screens.

Pinch: Place two of your fingers far apart, and then pinch them together.

Android // 4G & WiFi connections

4G connection

With your SIM card, you should be connected to the Internet without any further setup. The Fieldbook will only have signal if you are in an area covered by your provider's network. When connected to the 4G network, the 4G icon is displayed in the status bar.

Activating the mobile data

To be able to access Internet, mobile data must be activated.

1. Drag down the status bar.
2. Tap the "Settings" icon to open the settings menu.
3. Tap "SIM cards"
4. Tap "Mobile data" to activate it.

Android // 4G & WiFi connections

WiFi connection

Make sure that you are in a WiFi zone. You can access the WiFi settings quickly from the status bar.

1. Drag down the status bar.
2. The status dashboard is displayed.
3. Tap the “Settings” icon to open the settings menu.
4. Tap “Wi-Fi”
5. If Wi-Fi is off, slide the Wi-Fi switch to the “ON” position. Once the WiFi is on, the Fieldbook will scan and display the Wi-Fi networks in range.
6. Tap the name of the network you want to connect to.
Private networks are shown with a lock icon and will require to enter your password.

Android // Google & Contacts

Adding a Google account

A Google account lets you take full advantage of Google apps and services

1. Go to "Settings" > "Accounts" > "Add account".
2. Select the account type "Google" to add.
3. Follow the onscreen instructions to enter information about the account.

Once the account is created, you can access Play Store, Gmail, Hangouts, Maps and many other apps.

Synchronizing info

Information must be sync to be saved. Your data are backed up on Google servers.

1. Go to "Settings" > "Accounts" > "Google".
2. Select your account.

The list of information that can be sync are displayed.

3. Check all information in order to sync them.

You can get them back in case of loss of your device or SIM card.

When your Google account is added to a new device, all your saved information are collected.

Android // Google & Contacts

Saving your contacts

When your contacts are saved, they are always available on the web and can be synced to any Android phone that's set up with your Google account.

1. Install the SIM card with your contacts in your phone.
2. Tap on the All Apps screen,
3. Tap "Contacts"
4. Tap the Menu button > "Import/Export".
5. In Import/export contacts, select "Import from SIM card".
6. Select your Google account.
7. Check contacts to be imported and validate.
8. Once the contacts are imported in the Google account, go to "Settings" > "Accounts" > "Google".
9. Select you Google account. Make sure "Contacts" is checked.
10. Select the Menu button, then "Sync now".

Your contacts are saved to via your Google account.

Android // Hints & tips

The extended home screen:

Navigate between different home screen panels by swiping left and right.

Home button

Short press the Home button to go back to the main screen.

Tap and hold the Home button to display all the apps you have opened. Swipe any app left or right to close it.

Moving a home screen item:

Tap and hold an item until the positioning gridlines appear, then slide it to the desired location, and release your finger.

Removing a home screen item:

Tap and hold the item you wish to delete. Slide your finger towards the top of the screen and drop it over the "Remove" icon.

Uninstalling an item:

From the "All apps" screens, tap and hold an item, slide your finger towards the top of the screen and drop it over "Uninstall" bin.

Creating application folders:

Drop one app icon over another on a home screen and the two icons will be combined in a folder.

Android // Hints & tips

Widgets:

Tap the “Menu” button > tap “Widgets”. From the main Widget screen, you can move around widgets just as you do for app icons.

Changing your wallpaper:

Tap the “Menu” button > tap “Wallpapers”.

Locking the touchscreen:

From the quick settings dashboard in the status bar, touch “Settings”. In “Settings”, scroll down and touch “Security”. Touch “Screen lock”. Touch the type of lock you would like to use. After you set a lock, a lock screen is displayed whenever your screen wakes up, requesting the pattern, pin or other specified key.

Windows operating instructions of special function module

1. U-blox GPS

(1). The software bundled with this product includes software files subject to certain open .



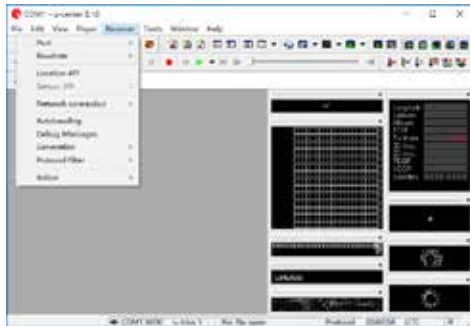
(2). Use power control tool and make it power on.



Windows operating instructions of special function module

(3). Open the software, chose receiver, and chose port again, click COM1.

(4). In the same way for receiver, chose Baudrate, click 9600.



(5). As below picture, double click the satellites model picture to enlarge.



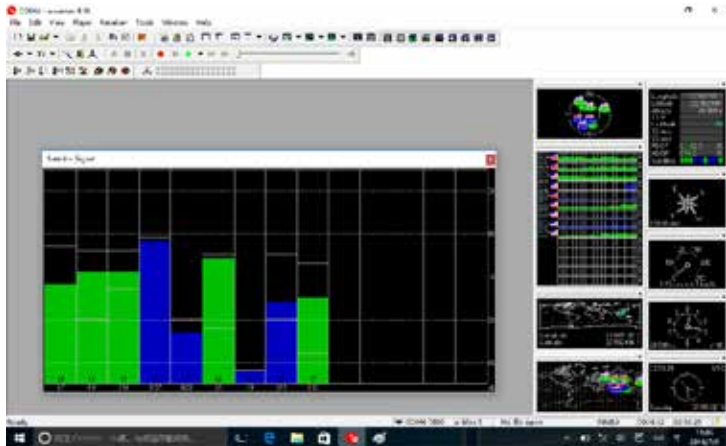
Windows operating instructions of special function module

(6). The blue colors are the satellites that searched, green color are effective satellites. The numbers in the right are signal value.

Standard:

Environment: in open field, no metal in around, no obstacles. Sunny weather, no clouds covering.

Condition: can see satellites above 12 pieces, effective satellites above 10 pieces. Have 2-3 pieces satellites value reach to above 40 dB.



Windows operating instructions of special function module

2. 1D module operation

(1). Copy the serial assistant (SPU) on the desktop.



(3). Install the opened software, chose corresponding serial port, Baud rate chose 9600.

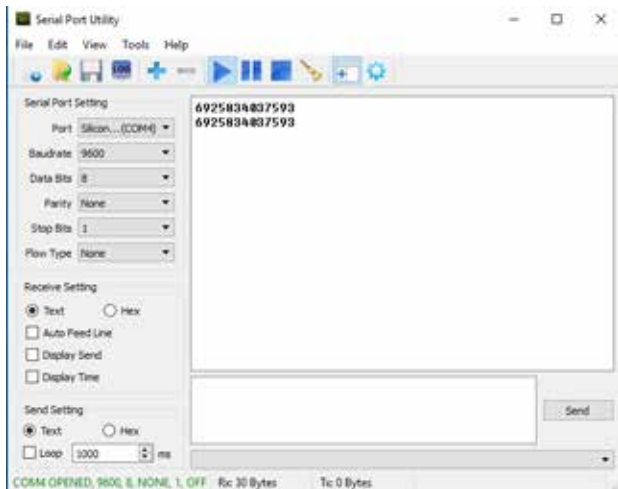
(2). Use power control tool and make it power on.



(4). Click start key, press the scanner key on the PAD and start to scan.

Windows operating instructions of special function module

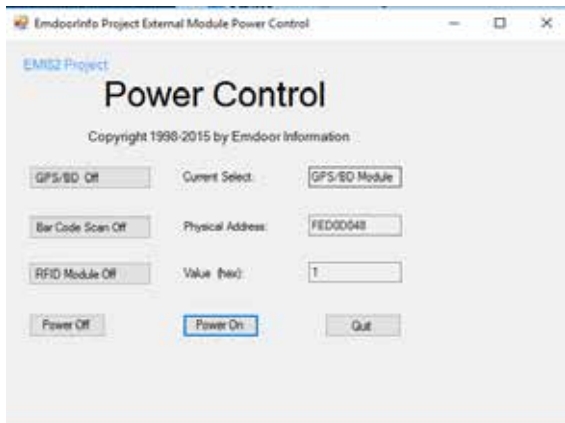
(5). Ok ! after scan successful, the result will show on the frame automatically.



Windows operating instructions of special function module

3. 2D module operation

- (1). Use power control tool and make It power on.
- (2). Create a text document.



Windows operating instructions of special function module

- (3). Open the text document, click the blank place, press the scan key on the PAD and start to scan.
- (4). The result of scanner will show automatically.



Android operating instructions of special function module

(note: please allow installation of unknow source before software installation)



Check: setting—security- unknown source.

Android operating instructions of special function module

2. GPS Module operation

- (1). Copy GPS testing software on the local.
- (2). Click install, and open.
- (3). See the GPS status shows off on the top left corner. Click off and enter into set interface.



Android operating instructions of special function module

(4).open the switch on the top right corner, and chose agree again.



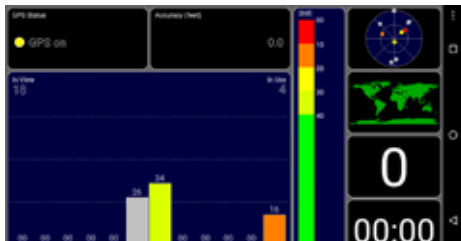
(5). Chose mode, click device only.



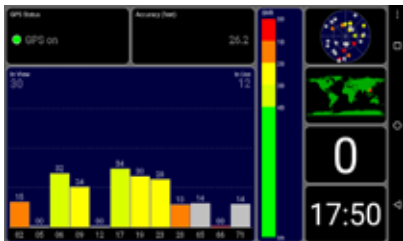
(6).Finally return GPS main interface. Can see GPS Status shows on.

Android operating instructions of special function module

(7). In open field and waiting for 1 min and check if there is a satellite.



(8). OK! wait for 3 mins and check if satellites value, quantity meet standard.



Standard:

Environment: in open field, no metal in around, no obstacles. Sunny weather, no clouds covering.

Condition: can see satellites above 12 pieces, effective satellites above 10 pieces. Have 2-3 pieces satellites value reach to above 40 dB.

Android operating instructions of special function module

3. 1D Module operation

open testing software will have operating instruction as below:



Android operating instructions of special function module

(1). Copy scan testing software to local.

(2). Click install, and open.

(3). Chose ttyUSB0 on the serial port node, chose 9600 or 115200 on Baud rate options, shows HEX.

(4). Click Serial port operation open options, press Scan key on Pad to scan relevant barcode.

(5). OK! after successfully, will show the right characters on the frame.



Android operating instructions of special function module

4. 2D Module operation

- (1). Copy scan code testing software to local.
- (2). Click install, and open.
- (3). Click the frame in the below, press the scan key and aim at the barcode which need to scan.
- (4). OK! after scan successfully, will show the right characters on the below frame.



Android operating instructions of special function module

(5). also can press scanner key to scan directly and will show as below.



(6). If scanner can not work, you can try scan the below USB switch code.

USB Device Type (continued)



HID Keyboard Emulation

Product accessories



Strap



Hand writing pen



Shoulder girdle



Charging docking



Battery



Hand split



Europe standard adaptor



US standard adaptor



three-in-one adaptor

Product accessories



Car charger



Straps



Car holder



Bracket 1



Bracket 2



Bracket 3

